



REFERENCE CATALOGUE 2024

Insides

REFERENCE CATALOGUE 2024

- 01 — About Us
- 02 — References
- 03 — Projects

Main Fields Of Activity

- **Steel Industry (Melting Shop, Rolling Mill)**
- **Sea Water Treatment Plant**
- **Power Plants**
- **Oil&Gas Plants**
- **Petro Chemistry**
- **Greenhouse**
- **Food&Beverage Industry**
- **Textile**
- **Instut on Market**

**REFERENCE
CATALOGUE
2024**



Company Profile

REFERENCE
CATALOGUE
2024

ARC serves the industry in the field of Industrial water treatment since 2005. The head office is located in Adana and also has a branch office in Istanbul, Izmir and Antalya. ARC gives service, product and project solutions to other companies that has a role in water treatment field all over the Turkey.



Our Activities

REFERENCE CATALOGUE 2024

1. PURIFICATION OF TECHNICAL WATER

Water Facilities VTP

Steel Mill

Rolling Mill Separation Plant

Nitrogen Cooling Systems

Circulating Systems With a Closed

Loop Oxygen Plants Systems

Dosing and Conditioning

Chemicals Systems

Automation Systems

2. TREATMENT OF INDUSTRIAL WATER

Sand Filter

Carbon Filter

Water Softening Systems

Ultrafiltration Systems

Reverse Osmosis

EDI Systems

Dosing Systems

Automation Systems

3. WASTEWATER TREATMENT

Classic Processing Systems

Active Sludge Chemical Systems

Wastewater Treatment Systems

MBR Systems

Regeneration Systems

Sludge Dewatering Systems

Automation Systems

References



F&F STEEL



Bossa





References



Turkey's Largest Demineralization Facility

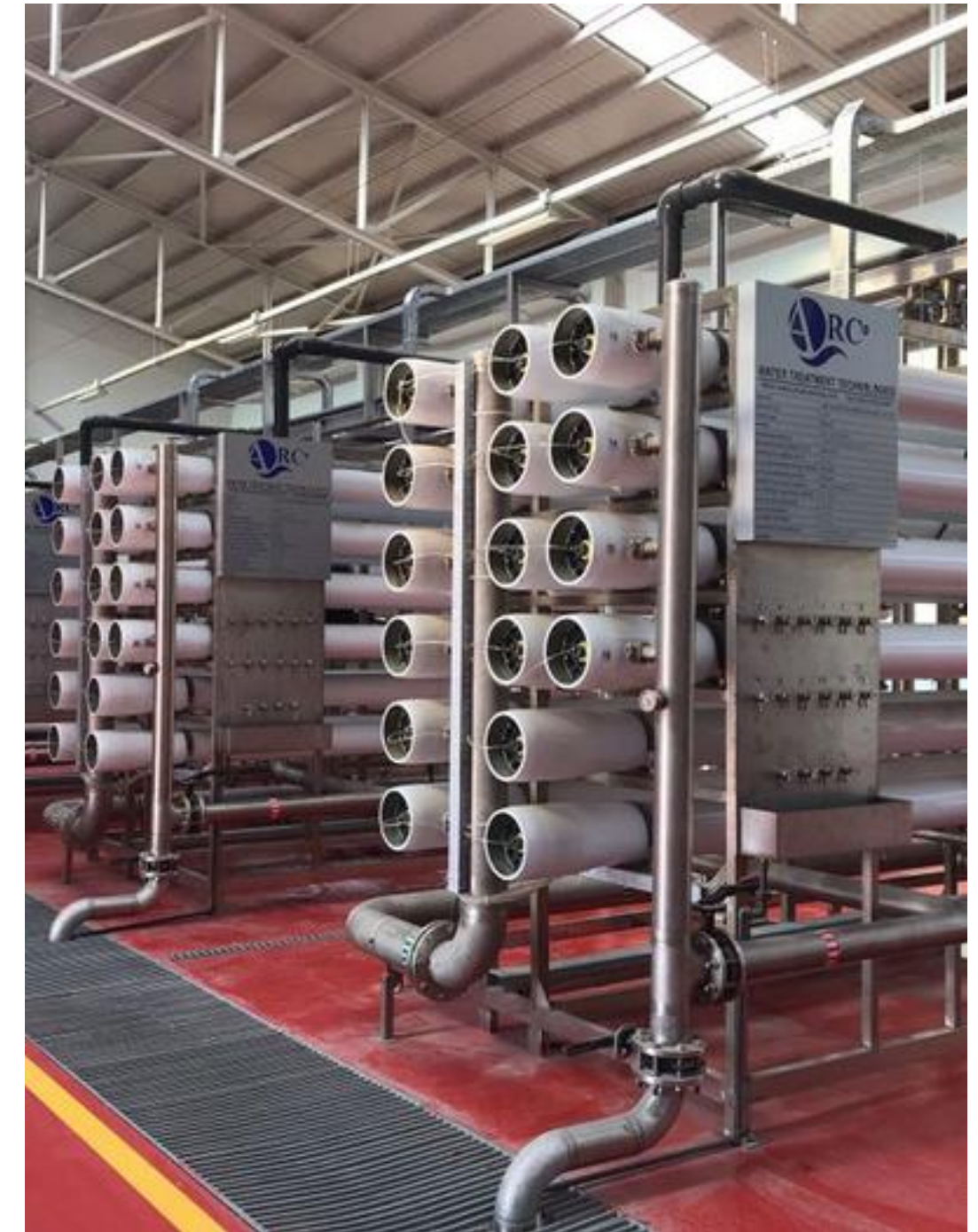
SASA
POLYESTER SAN. A.Ş.



ARC WATER
TECHNOLOGIES

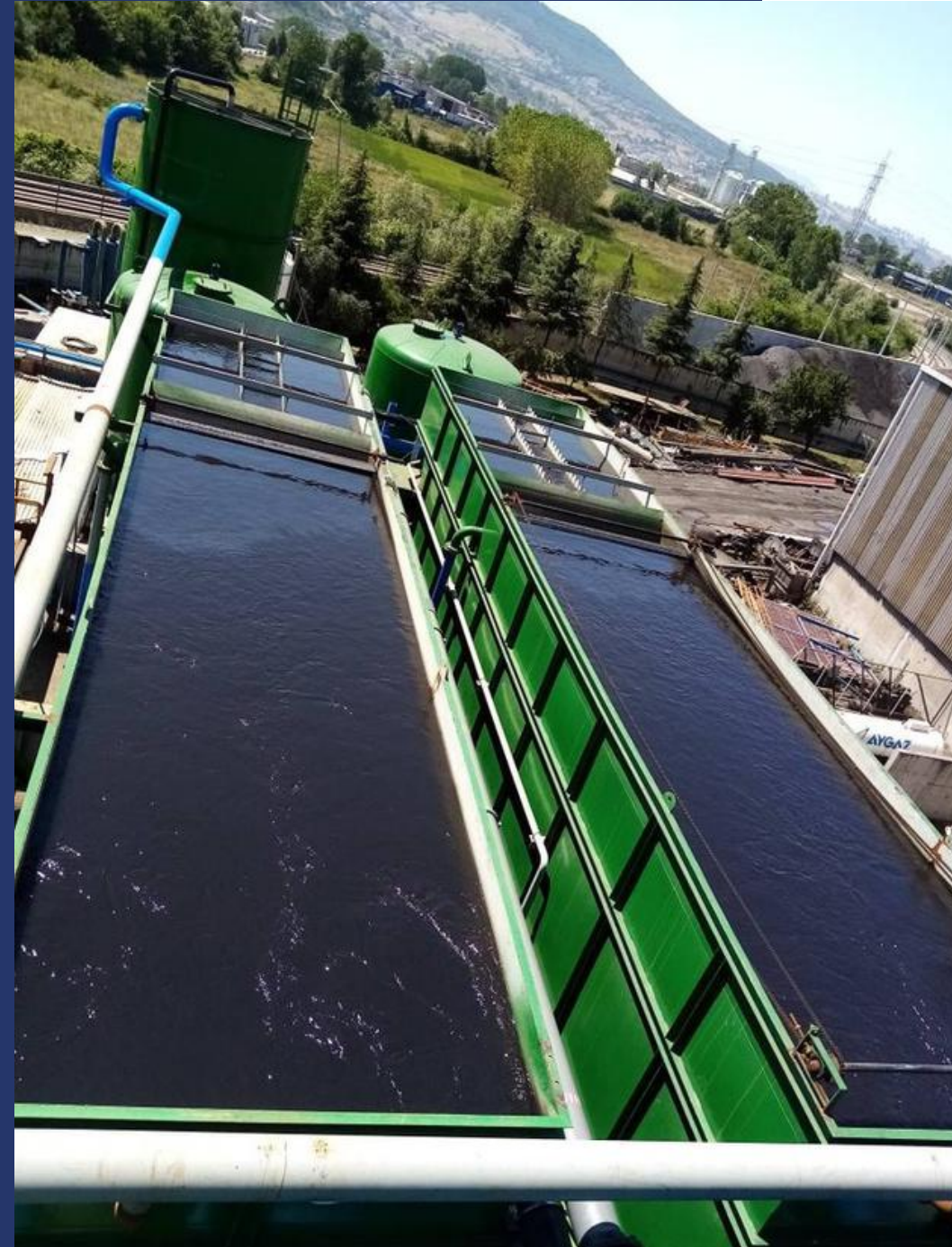
Turkey's Largest Demineralization Facility

SASA
POLYESTER SAN. A.Ş.

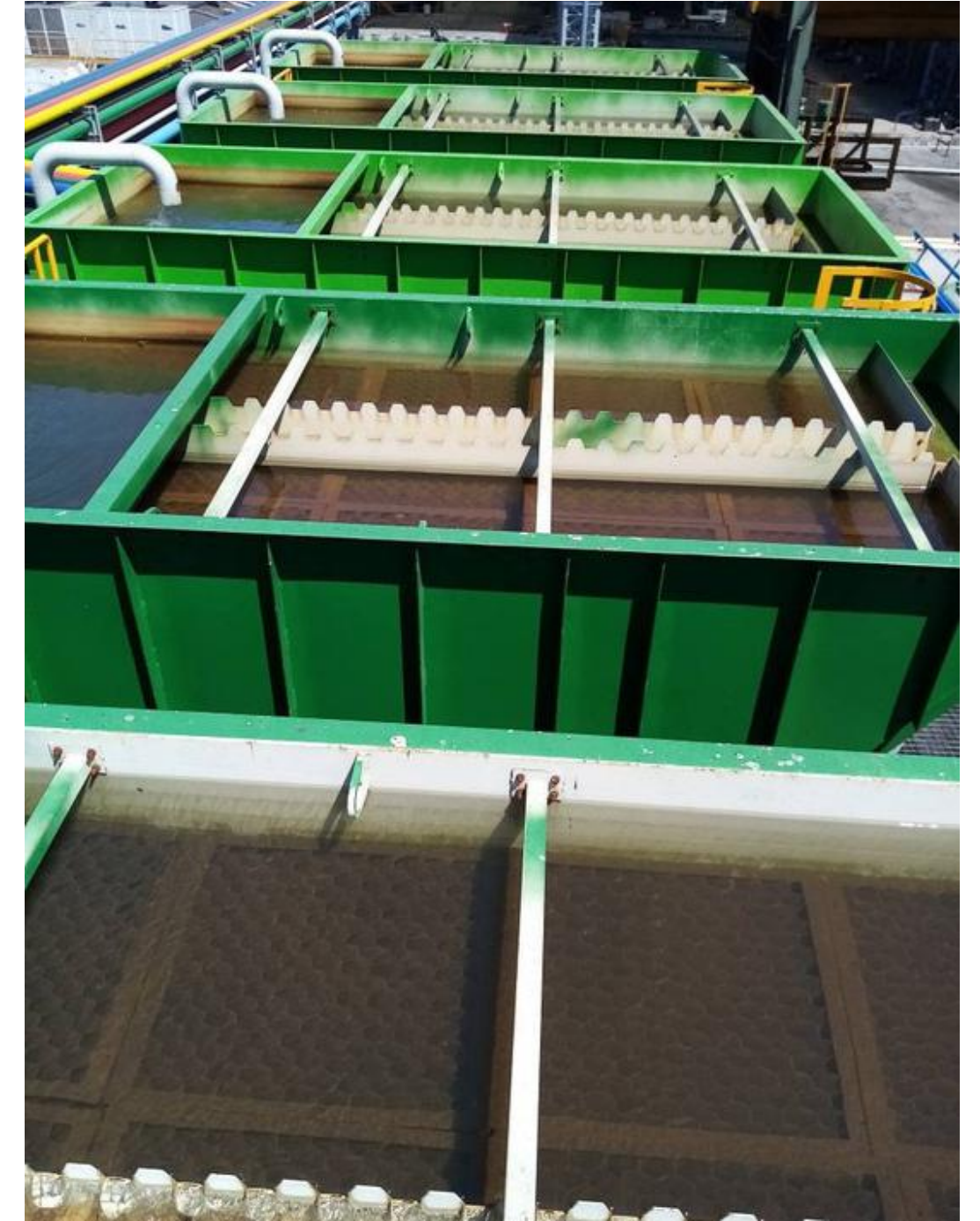


Mechanical Filter Unit	400 m3/h x 2 Unit	TOTAL 800 m3/h & 19200 m3/day
Ultrafiltration Unit	191 m3/h x 3 Unit	TOTAL 573 m3/h & 13752 m3/day
Reverse Osmosis System	149 m3/h x 3 Unit	TOTAL 447 m3/h & 10728 m3/day
Reverse Osmosis System	95 m3/h x 3 Unit	TOTAL 285 m3/h & 6840 m3/day
Electrical & Automation		

Water Facility



Water Facility



Mechanical Filter Unit	400 m3/h x 2 Unit	TOTAL 800 m3/h & 19200 m3/day
Ultrafiltration Unit	191 m3/h x 3 Unit	TOTAL 573 m3/h & 13752 m3/day
Reverse Osmosis System	149 m3/h x 3 Unit	TOTAL 447 m3/h & 10728 m3/day
Reverse Osmosis System	95 m3/h x 3 Unit	TOTAL 285 m3/h & 6840 m3/day
Electrical & Automation		

Waste Water Treatment Plant

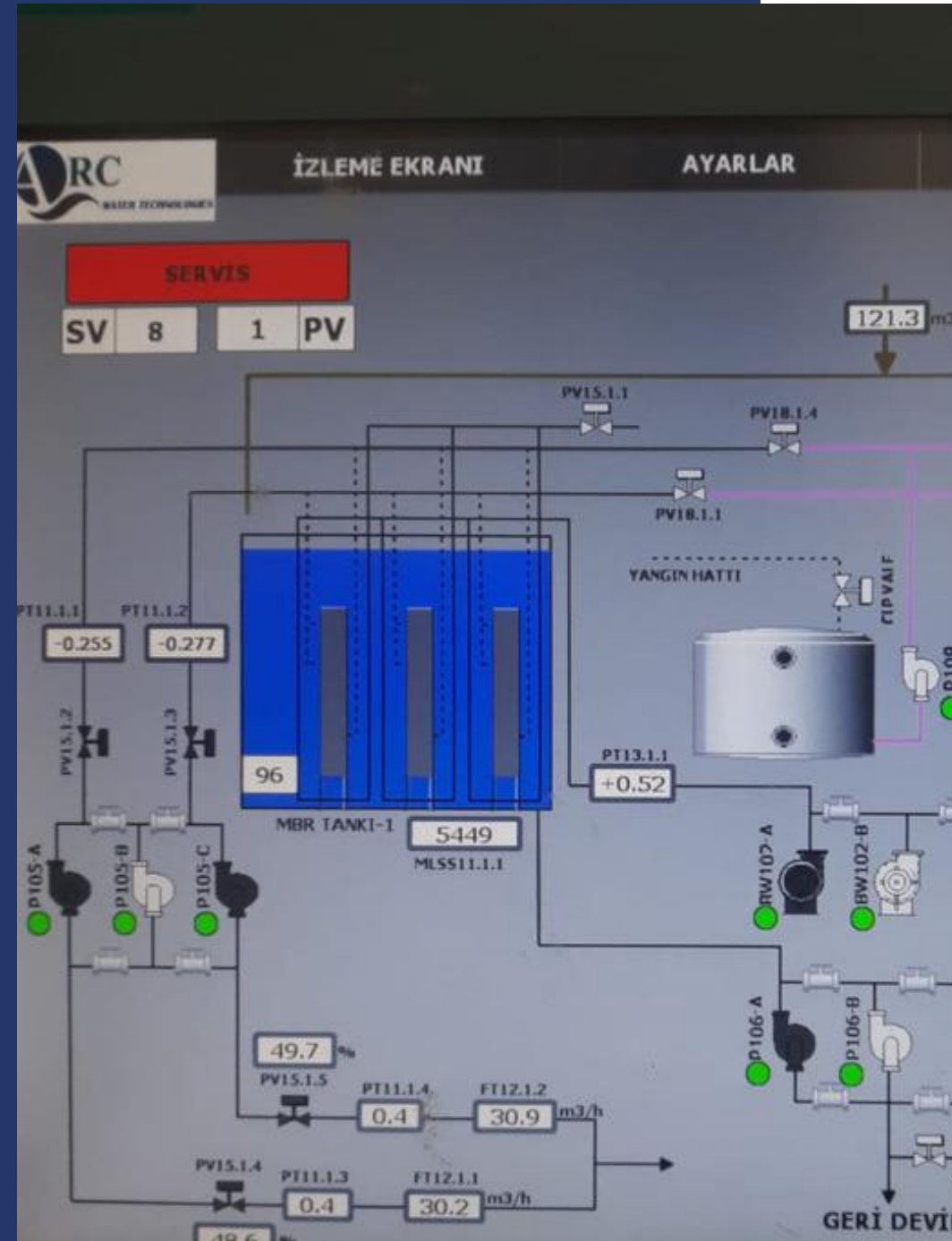
SASA
POLYESTER SAN. A.Ş.



ARC WATER
TECHNOLOGIES

Waste Water Treatment Plant

SASA
POLYESTER SAN. A.Ş.



ARC WATER
TECHNOLOGIES

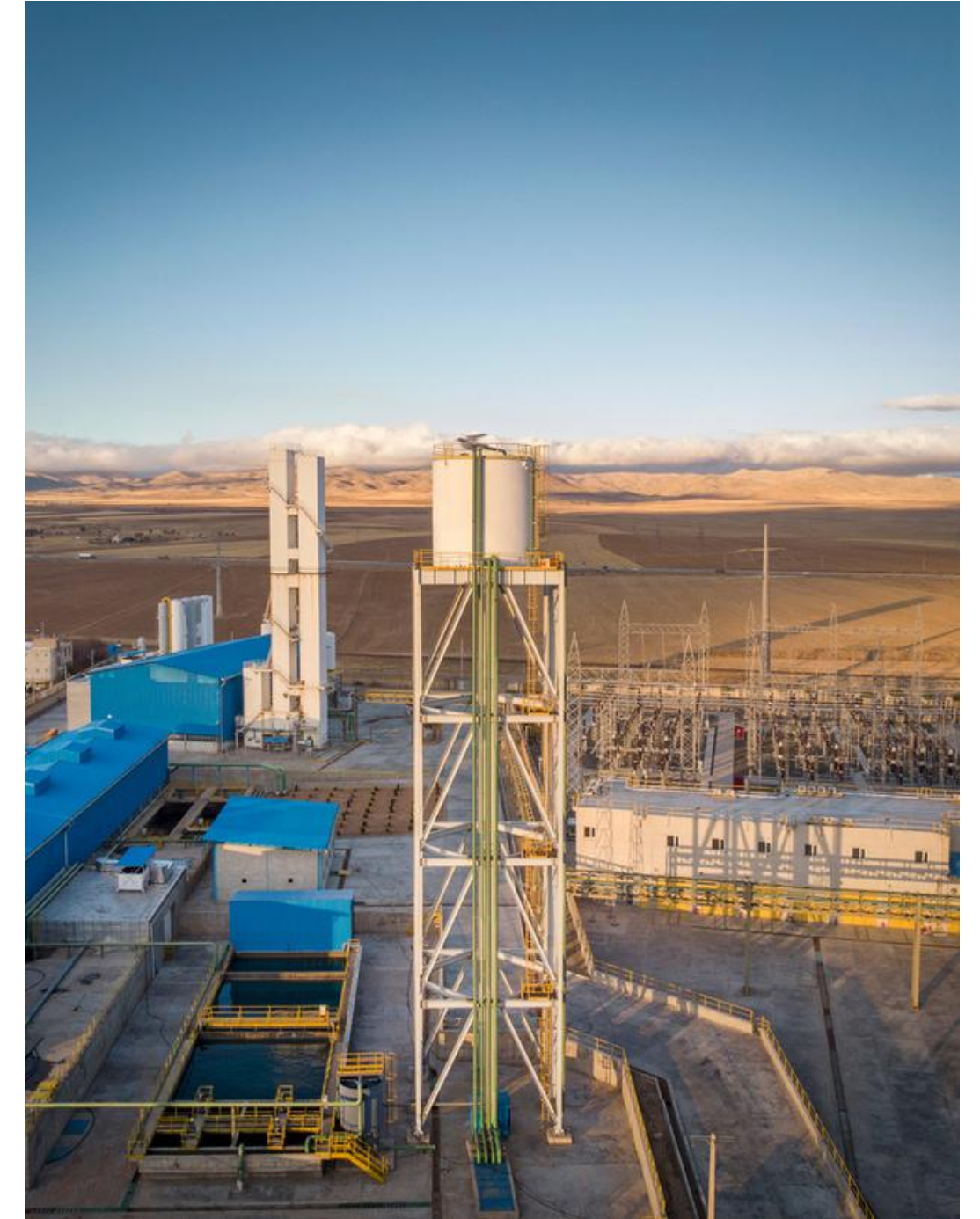
- Drum Sleeve
- Blancing Tank
- Lamella Unit
- Aerobic Tank
- MBR Tank
- Sludge Thickener
- Sludge Dewatering Unit
- Electrical&Automation

Capacity :
3500 m3/day

Turn-Key Project

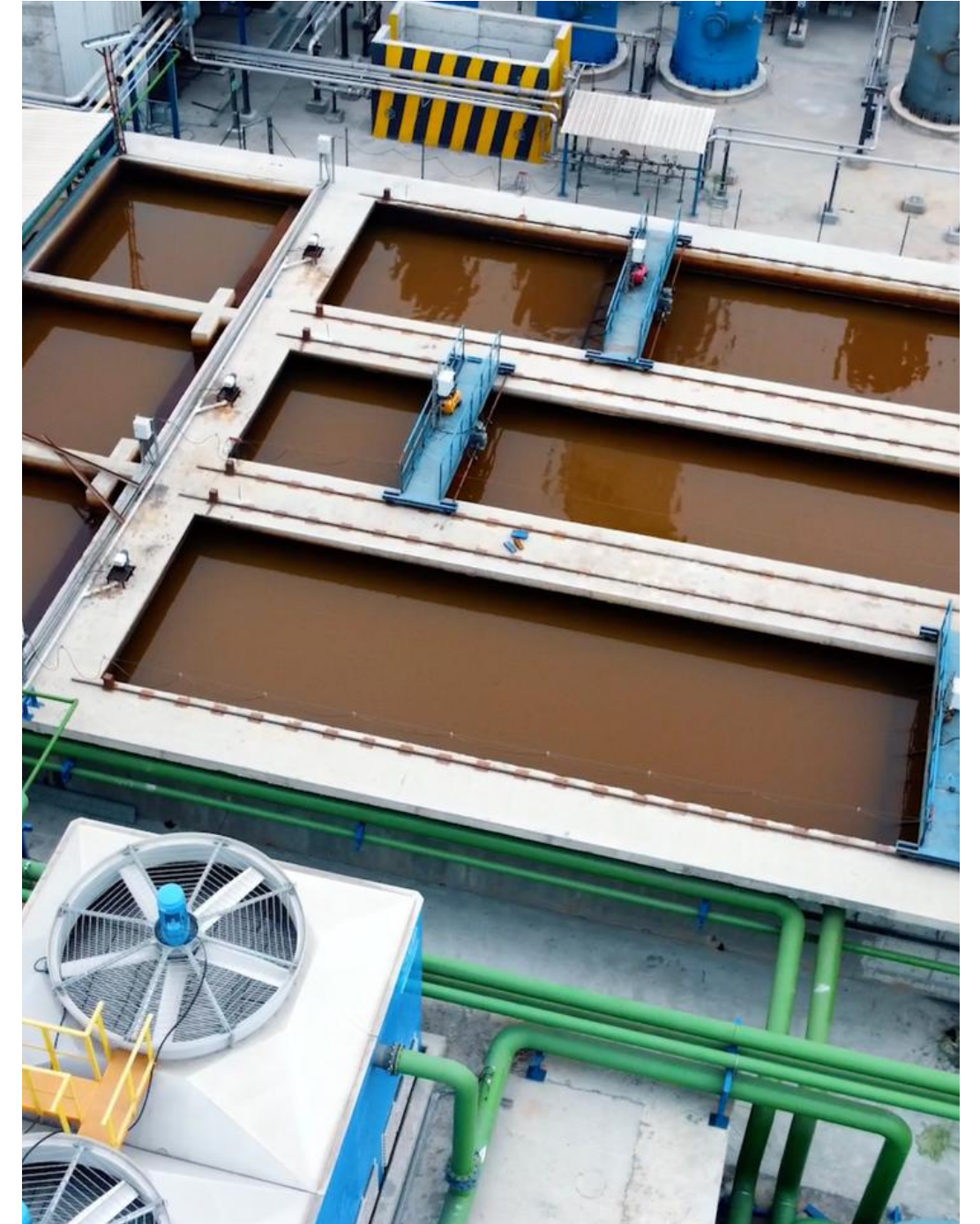


Turn-Key Project



- Meltshop Indirect Cooling System
- CCM Direct Cooling System
- CCM Mould Cooling System
- E.M.S Cooling System
- Lamella Unit
- Pumps Hall
- Electrical & Automation
- Ultrafiltration Unit : 400 m³/h
- Reverse Osmosis Unit : 220 m³/h
- Activated Carbon Filter : 500 m³/h
- Scale Sedimentation Tank : 900 m³/h
- Linear Scraper : Q 8 m
- Thickener And FilterPress : Q 7 m
- Side Stream Filters : 450 m³/h
- Tufal Filters : 600 m³/h

Water Facilities Project

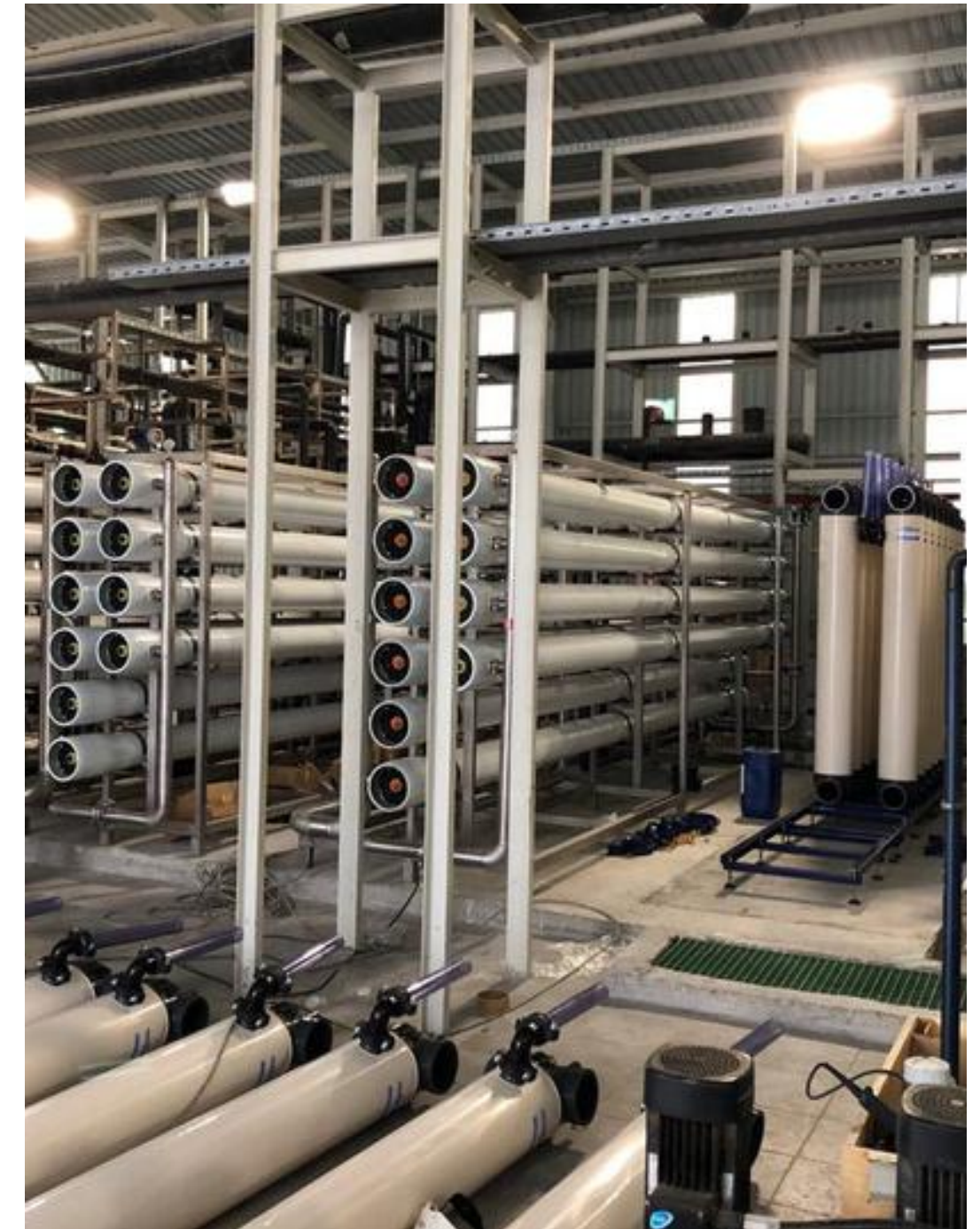


Water Facilities Project



- **Ultrafiltration System**
- **Reverse Osmosis System**
- **Filtration System**
- **Electrical & Automation**

Capacity :
11.000 m³/h



Mechanical Filter Unit	250 m³/h x 1 Unit
Ultrafiltration Unit	140 m³/h x 1 Unit
Reverse Osmosis System	60 m³/h x 2 Unit
Reverse Osmosis System	48 m³/h x 2 Unit
Sand Filter	80 m³/h x 1 Unit
Softening System	80 m³/h x 1 Unit

TOTAL 140 m³/h & 3360 m³/day

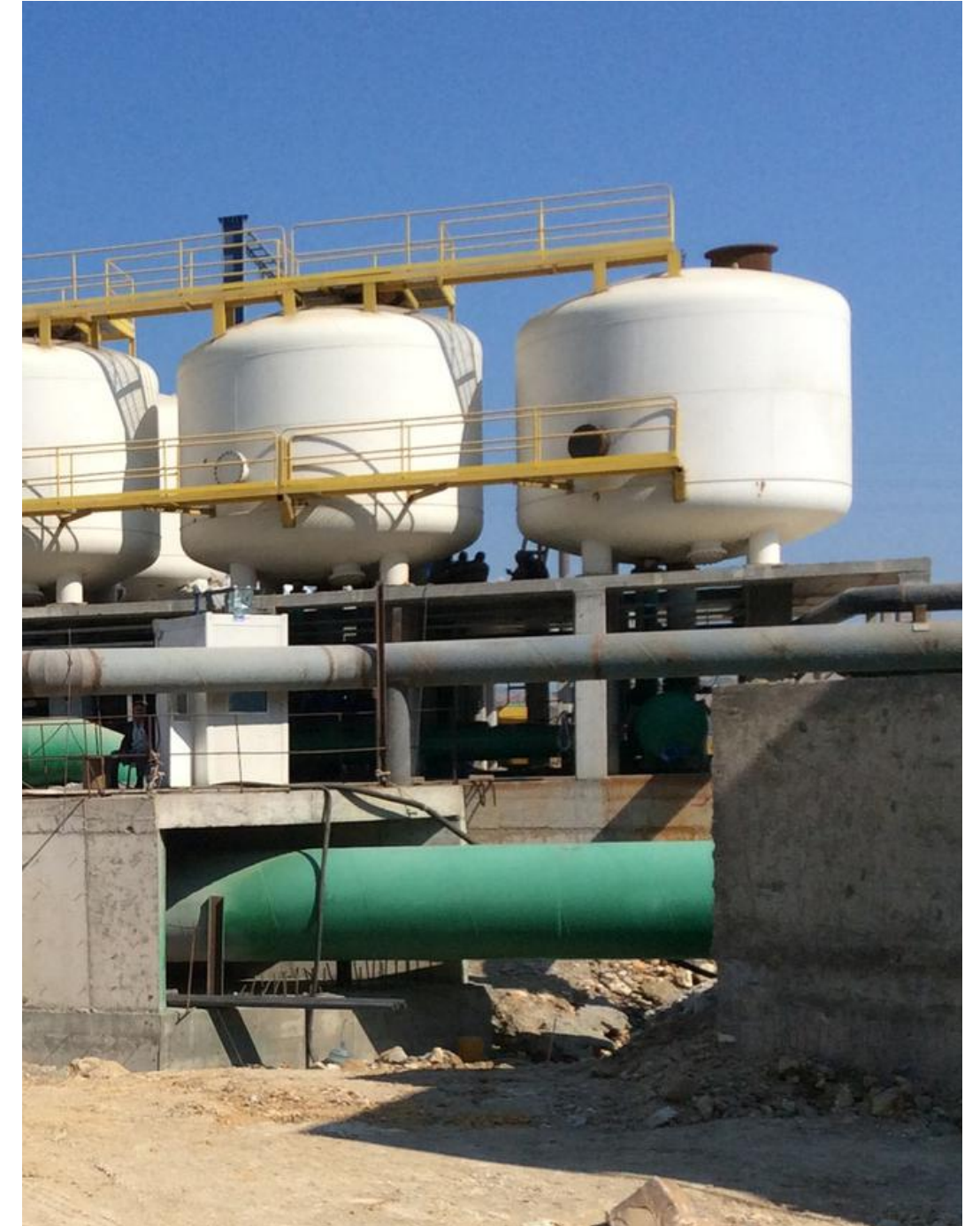
TOTAL 120 m³/h & 2880 m³/day

TOTAL 96 m³/h & 2304 m³/day

TOTAL 80 m³/h & 1920 m³/day

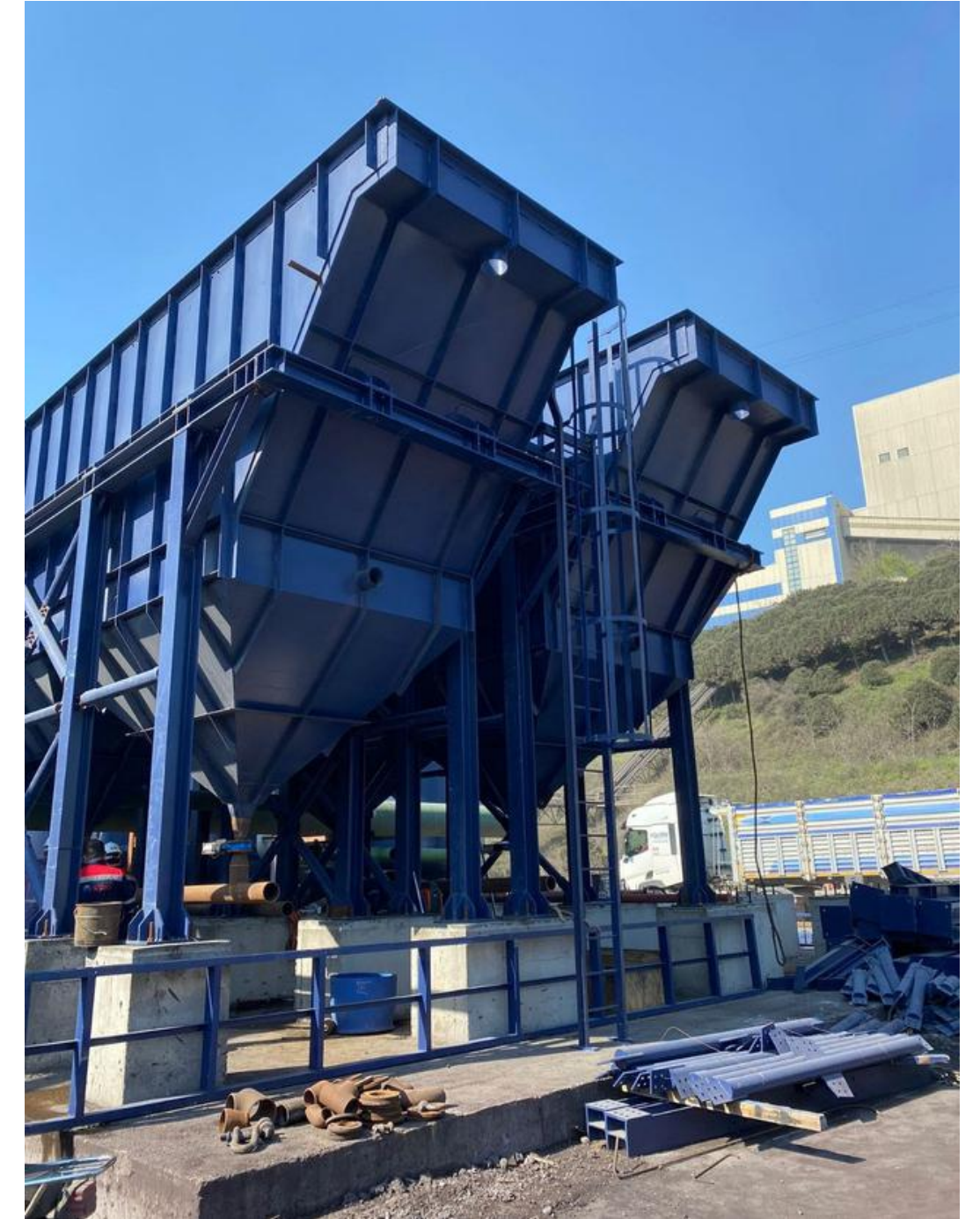
TOTAL 80 m³/h & 1920 m³/day

Steel Plant Facility



- **Filtration System** **15.700 m³/h**
- **Chemical Dosing Units
and Chemical Treatment**
- **Ro+Pretratment** **100 m³/h**
- **Softening System** **700 m³/h**
- **Project Engineering &
Supervision**

EPC Project



Capacity : 4900 m³/day

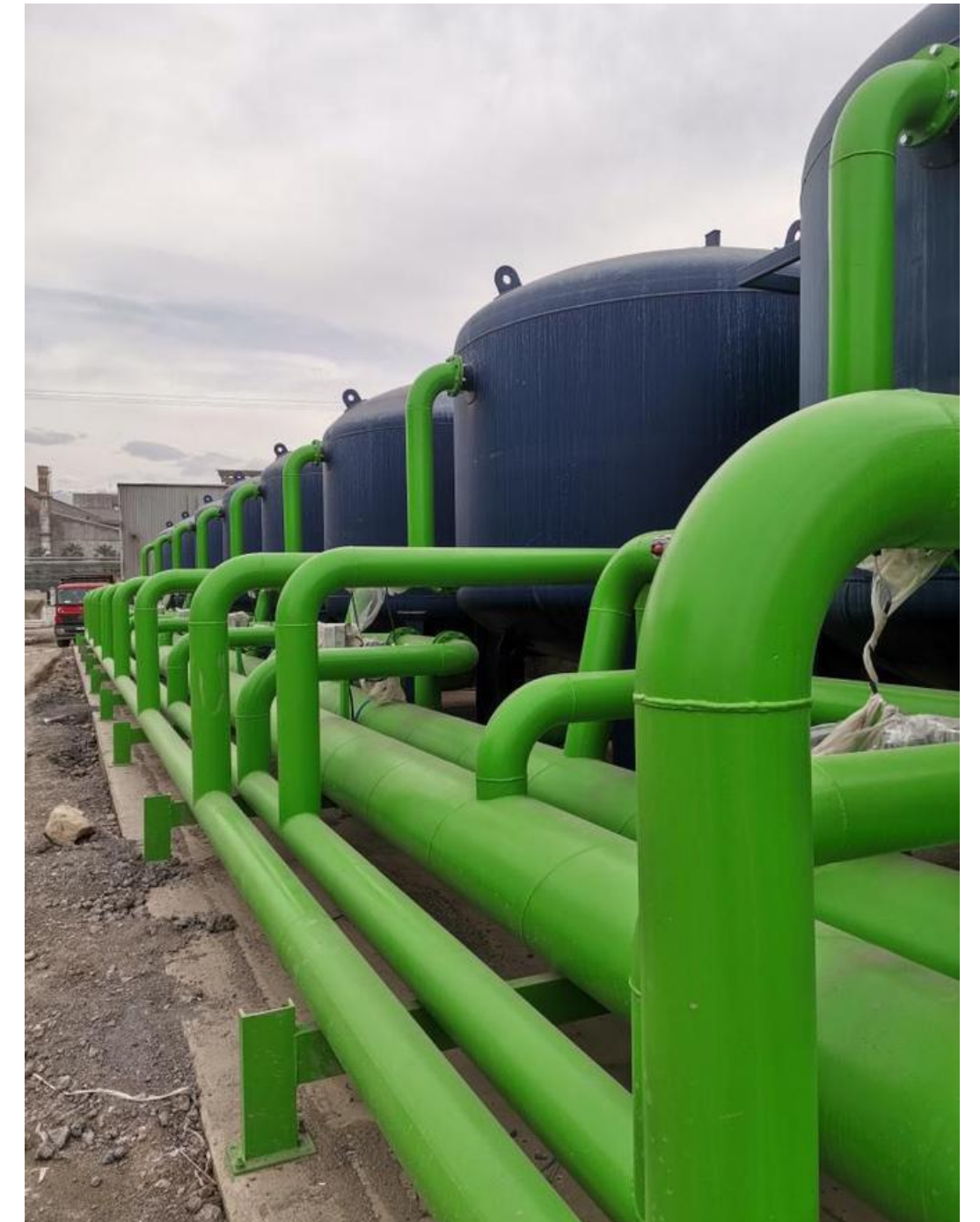


Sand Filter : 144 m³/h - 9 Pieces



Capacity : 1300 m³/day

Turn-Key Water Facilities

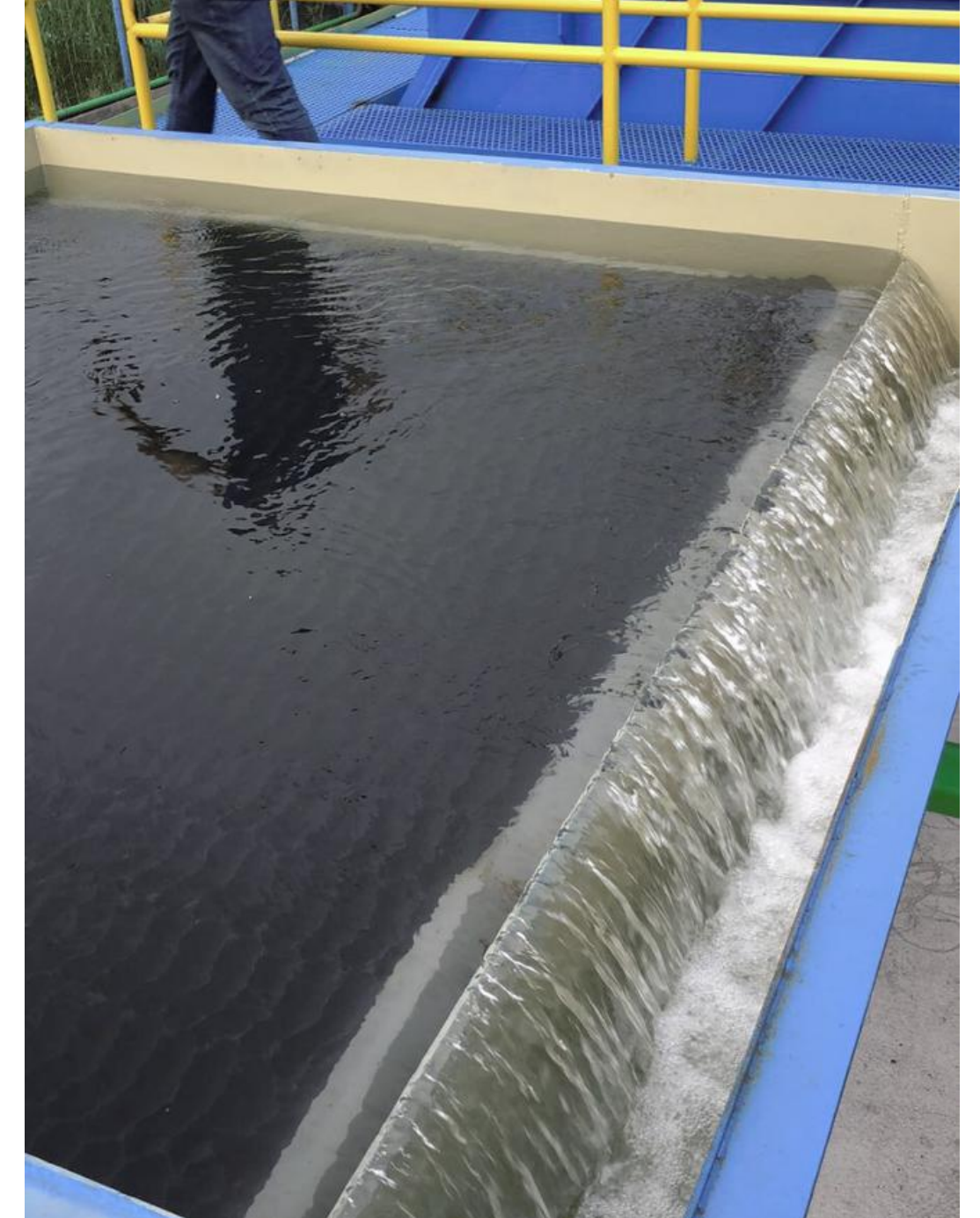


Turn-Key Water Facilities



Turn-Key Water Facility





Turn-Key Water Facilities

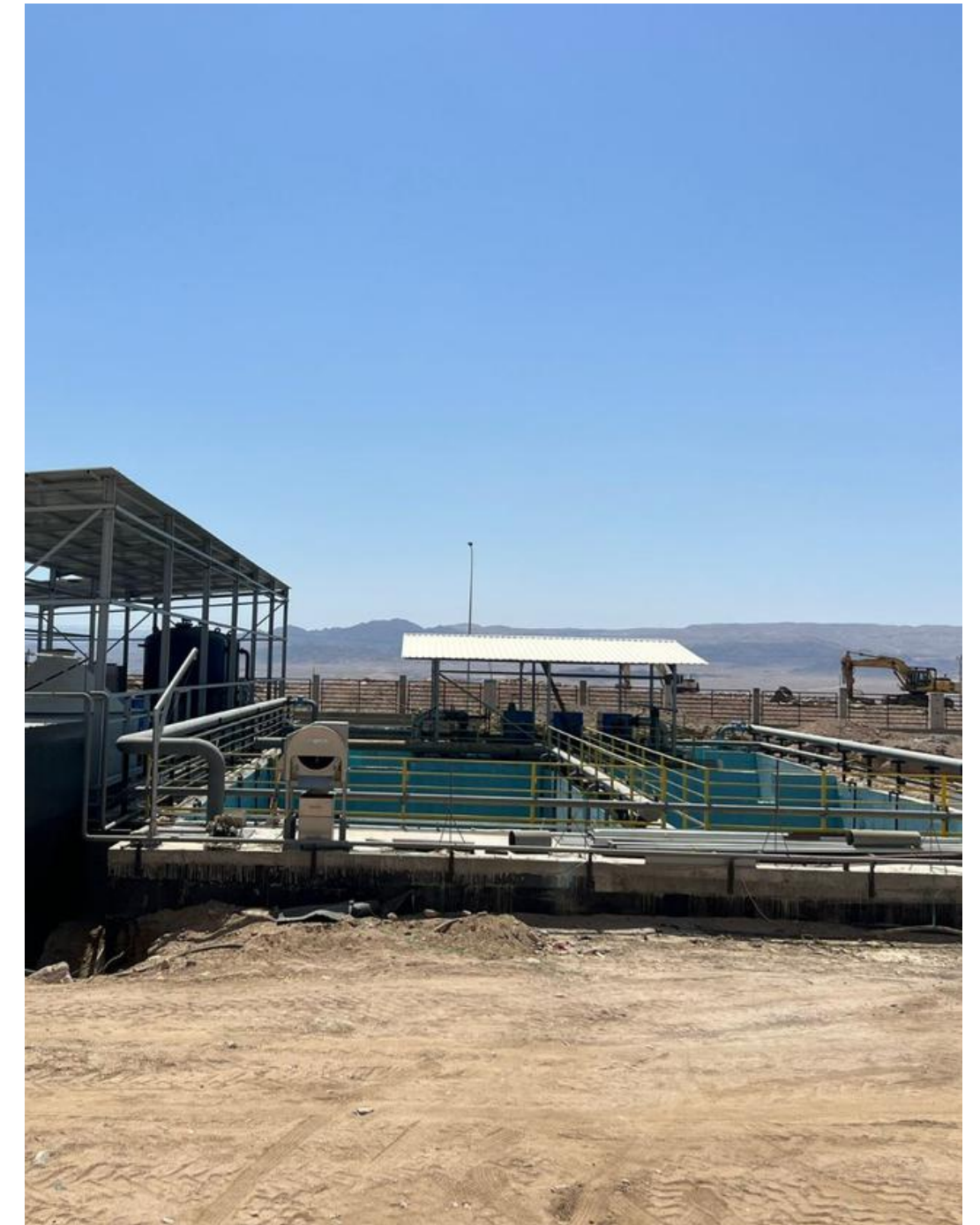


Denim Washing And Pretreated WWTP Effluent Water



Capacity : 4000 m³/day

Aqaba Project



Capacity : 17.500 people / 3500 m³/day

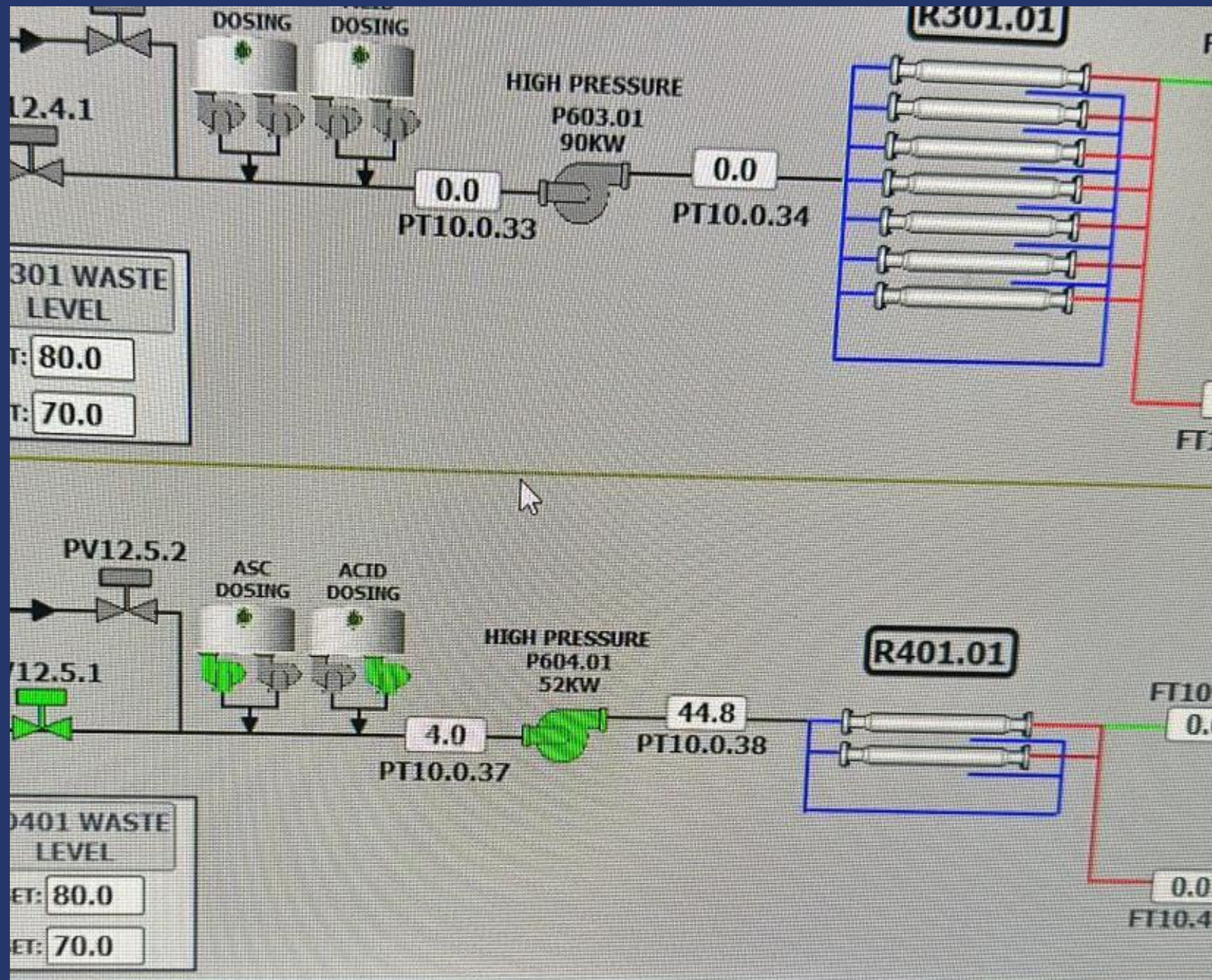


Zero Waste Project CF3



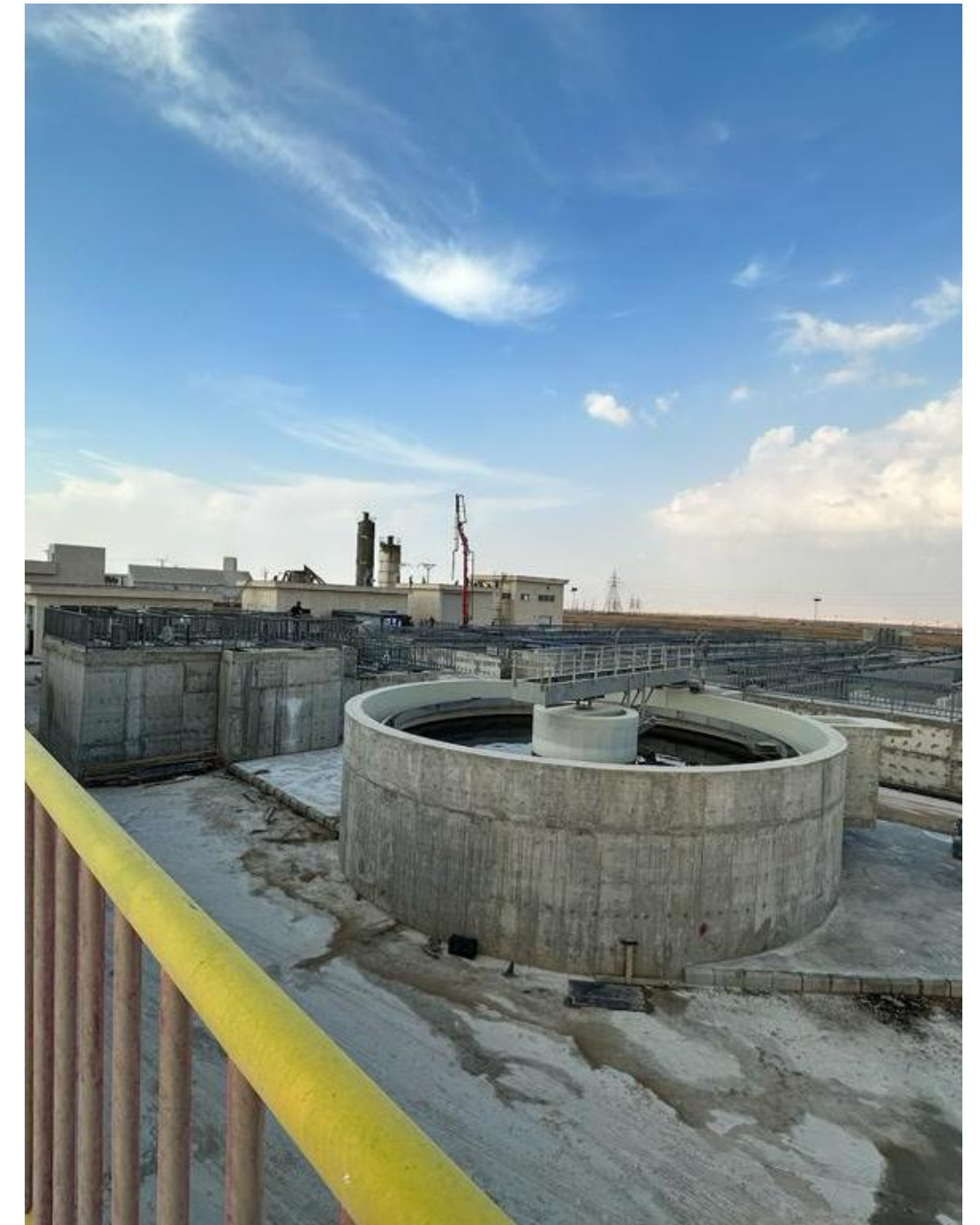
Capacity : 150.000 m³/day

Zero Waste Project CF3



Capacity : 150.000 m³/day

Zero Waste Project CF3



Capacity : 150.000 m³/day

Steel Mill WTP



Steel Mill WTP



Steel Mill WTP



WTP Plant Project

 **TOSÇELİK** Algeria



 **ARC** WATER
TECHNOLOGIES

WTP Plant Project

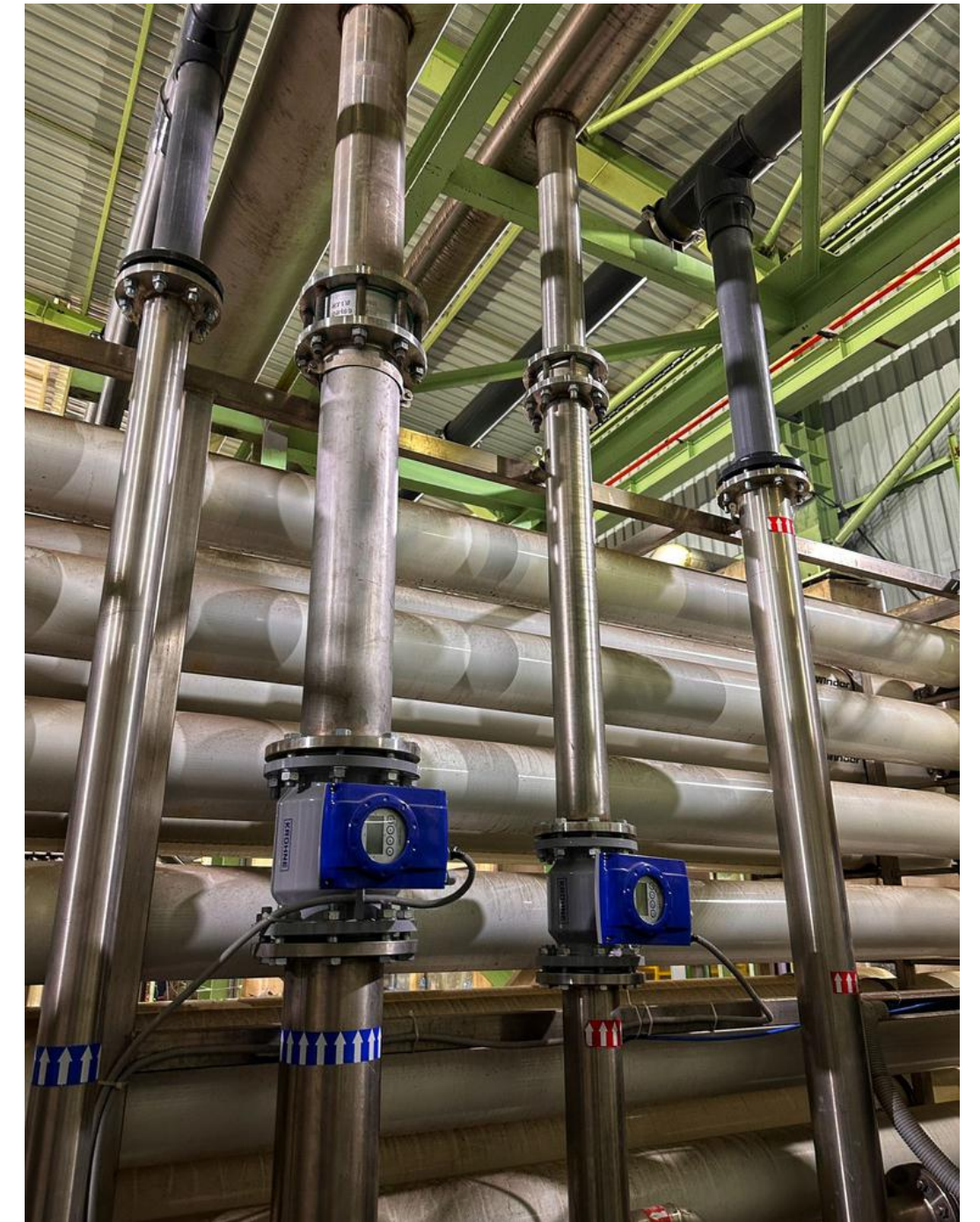
 **TOSÇELİK** Algeria



 **ARC** WATER
TECHNOLOGIES

WTP Plant Project

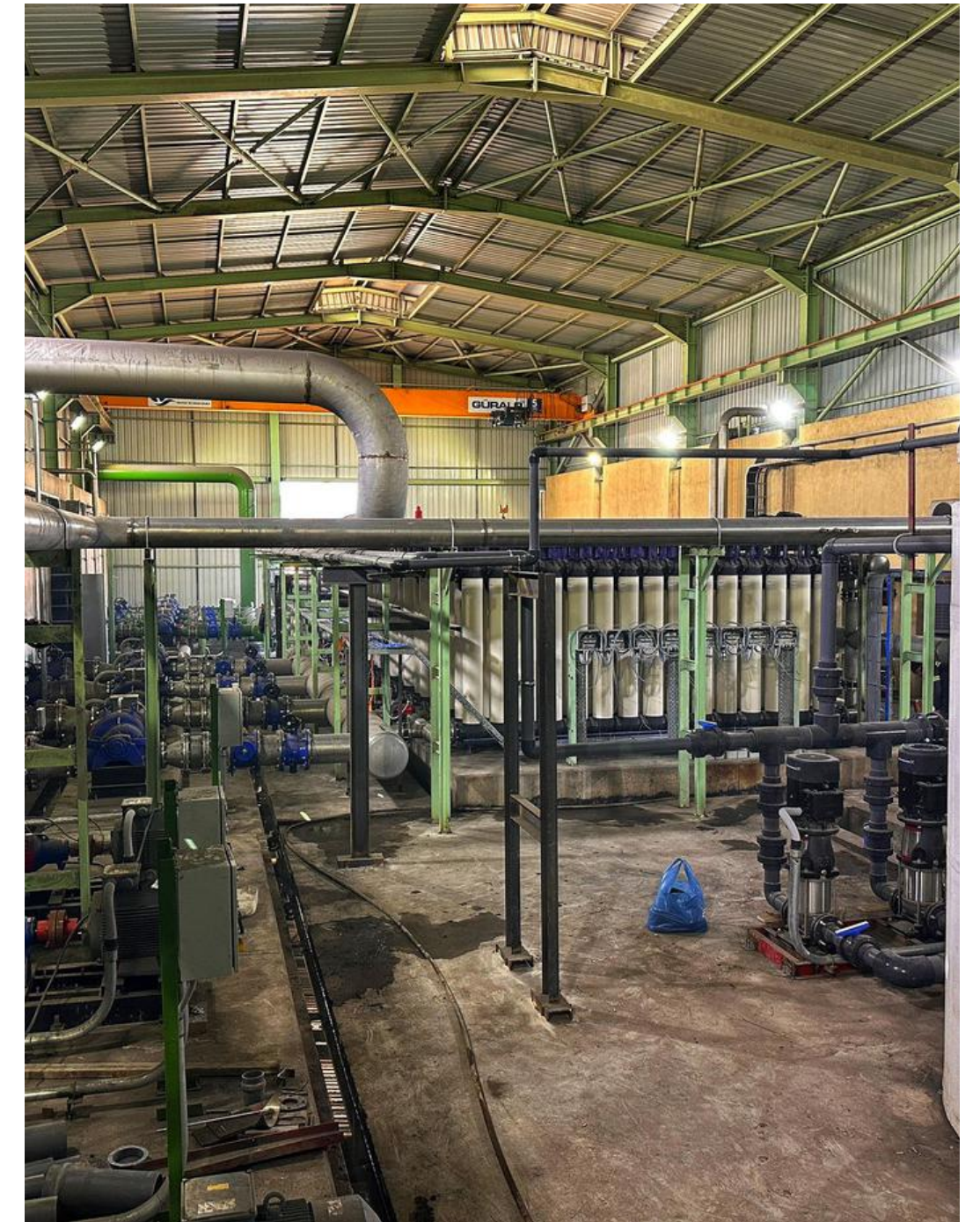
 **TOSÇELİK** Algeria



 **ARC** WATER
TECHNOLOGIES

WTP Plant Project

 **TOSÇELİK** Algeria



 **ARC** WATER
TECHNOLOGIES

SBR Systems



AKKUYU NÜKLEER
ROSATOM

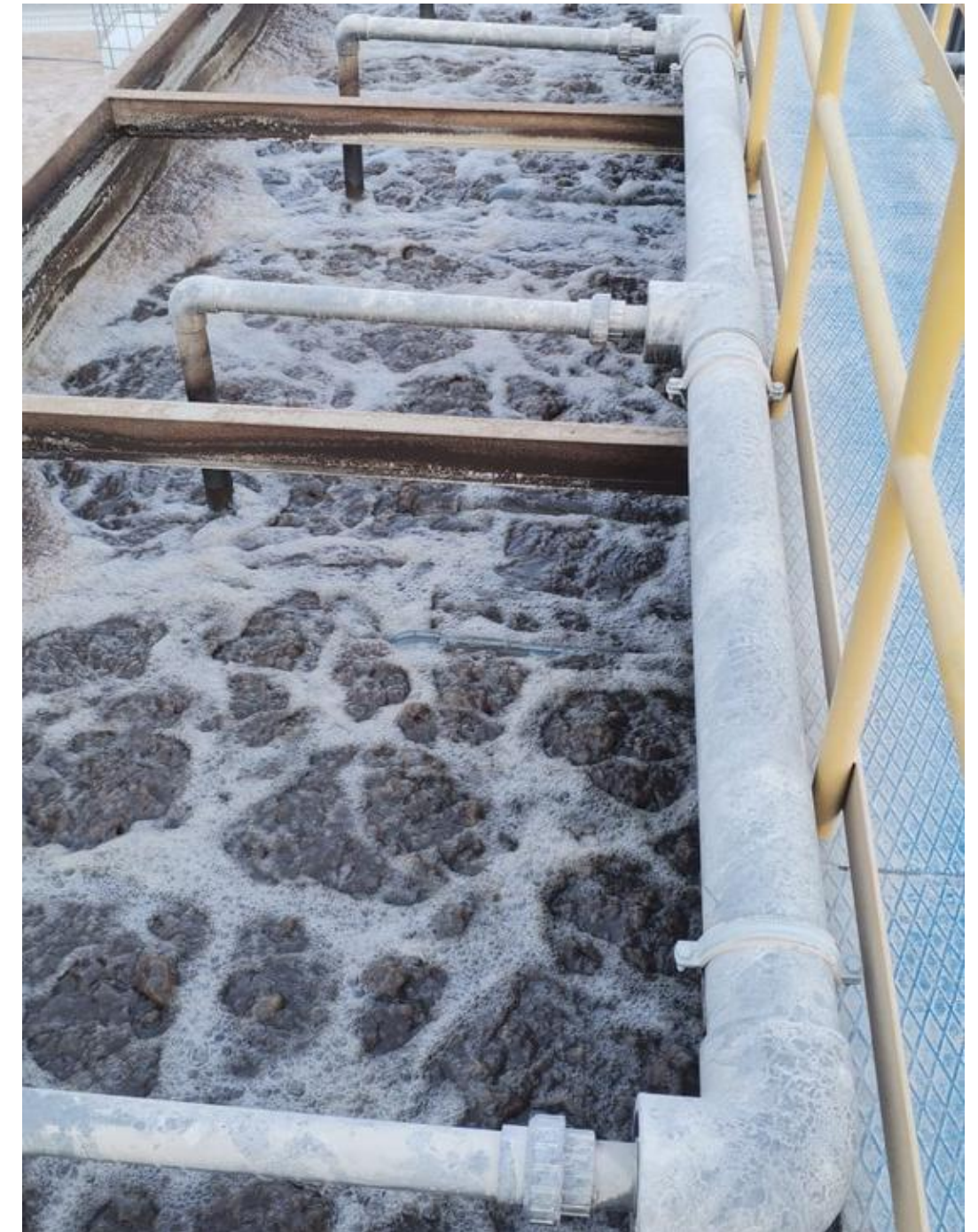


Capacity : 200m³/day x 9 Unit

Domestic WWTP



AKKUYU NÜKLEER
ROSATOM



Capacity : 7.000 people / 1200 m³/day

Contact Us

Head Office & Factory

Zeytinli Mah. Turhan Cemal Beriker
Bul. 806/3A Seyhan / ADANA
O (322) 456 23 69
info@arcwater.com.tr
arcwater.com.tr

Istanbul Office

Atatürk Mahallesi Ataşehir Bulvarı
Ertuğrul Gazi Sokak Metropol
İstanbul Sitesi A2 Blok Kat 31 D 450
Ataşehir/İSTANBUL

Antalya Office

Ayanoğlu Mah. Süleyman
Demirel Bul. No:251/B Kepez /
ANTALYA

Izmir Office

29 Ekim Mah. 153. Sok. No:9D
Menemen/İzmir

Kazakhstan Office

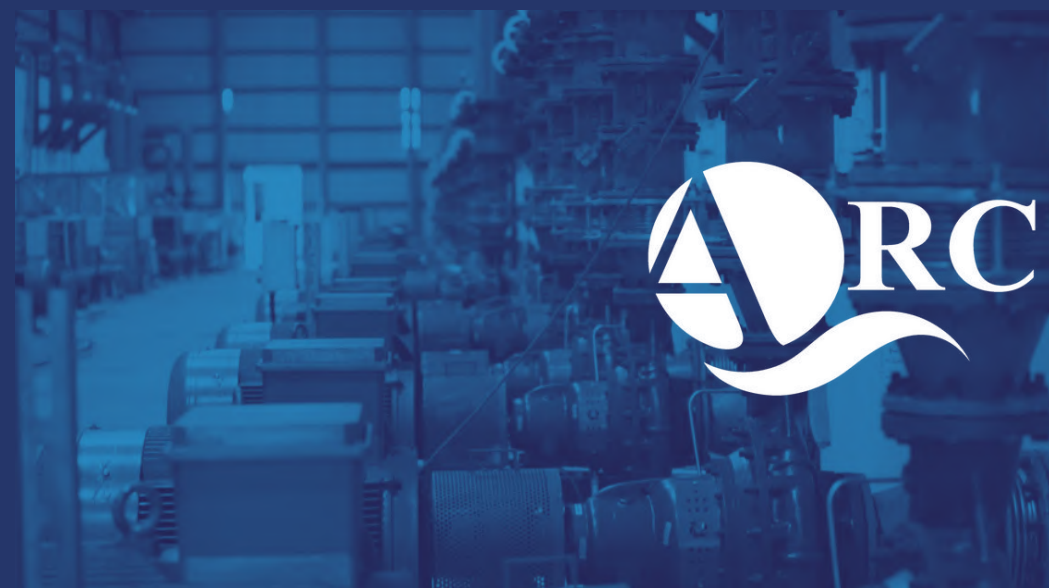
14 Mkr 74/1 K7 Group Office 6
Floor Office
AKTAU/KAZAKHISTAN
bashir@arcwater.com.tr

Baghdad-Iraq Office

+964 (783) 754 44 39
nibras.ali@esct.com.tr

Contact Us

Thank You



**WATER
TECHNOLOGIES**